



ANL / GLENLEES

Polled Herefords

& Guests

PRODUCTION SALE

**BROOKS FARMS · BLAIRS.AG CATTLE CO. · GOLDEN OAK LIVESTOCK
OCTOBER 16, 2021 · 1:00 PM · STEELMAN, SK · CANADA**

FROM THE DESK AT T BAR

Welcome to the ANL/Glenlees & Guests Annual Fall Female Production Sale on October 16, 2021, at the ANL headquarters, Steelman, Saskatchewan. This long running event is designed to supply Polled Hereford breeders who are serious about enhancing their breeding programs with cutting edge genetics. Your hosts and their guests are multi-generational seedstock producers who over the past decades have supplied the livestock industry bulls in the spring and females in the fall. These programs have been scrutinized by all types of judges and have shown that they are competitive on any level.

Being that Agribition is slated to celebrate the 50th Anniversary in November, these folks are offering the most exciting group of competitive prospects ever run through the ring. With outstanding phenotype and cutting-edge genetics, you can be assured that you are bidding on and buying front pasture genetic quality that will excel in years to follow. Those of us that attended the Southeast field day at ANL this past summer had the pleasure of previewing a cross-section of the offering.

The lineup of bred heifers is outstanding... sound, highly maternal and carrying early services. No doubt the flush mates of ANL's "115F" will not be over shadowed, nor the "Evolve" bull calf out of the 2018 CWA Champion female. The embryos offered are sourced from highly proven breed foundation builders. The opportunities in this event are unlimited for all programs and every budget.

Feel free to stop by any of the operations anytime time prior the sale and preview their programs. Don't hesitate to give any of the breeders a call and discuss the cattle and the opportunities that will fit your breeding needs... they all like to talk cattle, especially Polled Herefords. This event is in the middle of the "Saskatchewan Sweepsteaks" so plan to stop by the ANL headquarters the evening prior for a quick peak and some great fellowship.

Plan to be with us in person, online or on the phone and be a part of this exciting seedstock event. During these times, feel free to give any of the T Bar C Team a call and we will be pleased to assist you in a professional and confidential manner with your selections.



Chris Poley
306-220-5006



Shane Michelson
403-363-9973



Ben Wright
519-374-3335

Chris Poley

Box 2330
Warman, SK S0K 4S0

Ph: 306-933-4200
Fax: 306-934-0744

info@tbarc.com
www.buyagro.com

WELCOME FROM ANL POLLED HEREFORDS

Once again fall has arrived with new challenges. COVID is still top of everyone's mind although for most of us it is not the most prevalent. Most concerning this real is the drought many of our fellow cattle breeders face. We were probably some of the lucky ones this year having rain in June which brought along the hay and grassland. Although that quickly changed in July with hot, humid temperatures and very little rain. Still our crops came along and although not the best, better than some.

We are pumped about this years offering. Most of all the two flush heifer calves. The flush off 115F generated lots of interest at the SE Zone Field Day and the two calves were are offering are right up there in the top end. Our partners Danny, Calvin and Tom are just as excited as we are about this group.

Our friends Glenlees and Brooks have consigned another great group with the bred all being consistent from every herd. We welcome them again this year.

Kevin and the Blairs Ag family have put forth embryos for that will benefit anyone's herd.

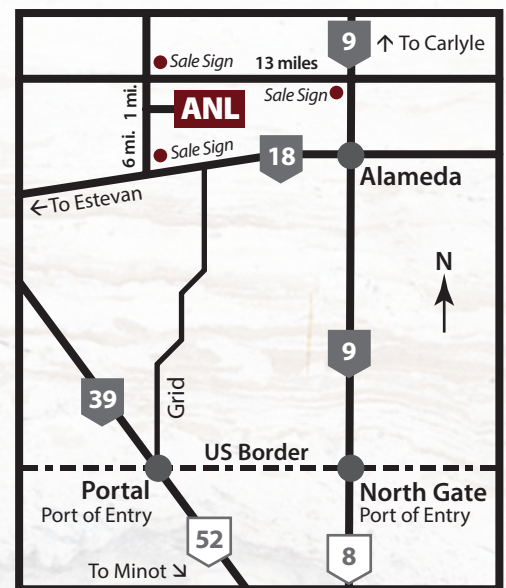
We look forward to visiting with our fellow breeders this year. It has been far too long! Please feel free to call or come take a look anytime. If there is any questions give T-Bar staff or one of us a call.

Karl & Karen Lischka

TO OUR FOREIGN CUSTOMERS:

Arrangements pertaining to purchases must be made **prior to the sale** with each individual consignor.

ANL Polled Herefords



JOIN US THE EVENING PRIOR FOR VIEWING OF THE CATTLE AND REFRESHMENTS.

PLAN A SWEEP "STEAKS" WEEKEND

Friday, October 15
Lone Pine/Airriess Acres
Invitational Event
Vibank, SK - 2:00 pm

Saturday, October 16
ANL/Glenlees
Polled Herefords & Guests
Stelman, SK - 1:00 pm

Sunday, October 17
Blair-Athol/Haroldson's
& Friends Sale
Arcola, SK - 1:00 pm

Monday, October 18
Square-D
Polled Herefords
Langbank, SK - 1:00 pm

ANL/GLENLEES & GUESTS PRODUCTION SALE

Saturday, October 16, 2021 - 1:00 PM

At ANL Polled Herefords

Steelman, Saskatchewan (19 Miles North of North Portal)

Your Hosts

ANL Polled Herefords

Karl & Karen Lischka
Cory, Brenden & Cayden Lischka
Box 14, Steelman, SK, S0C 2J0
Phone: 306-487-2670 Cell: 306-487-7794
Fax: 306-487-2793
Email: lischka@sasktel.net
Visit www.anlpolledherefords.com

Glenlees Polled Herefords

George & Annette Lees
Box 358, Arcola, SK, S0C 0G0
Phone: 306-455-2612
Fax: 306-455-2177
Corey, Tasha, Emma, Kyla & Becca Lees
Box 1, Arcola, SK, S0C 0G0
Phone: 306-455-2714 Cell: 306-577-9971
Email: tclees@signaldirect.ca
www.glenlees.com

Brooks Farms

Box 241, Alameda, SK S0C 0A0
Blayne, Stacey, Ethan & Marshall: 306-485-7063
Jeremy, Rachelle, Hudson & Ryker: 306-485-8003
Blake, Amanda, Jack & Brynn: 306-485-8488
Haley: 306-485-9216
Email: jeremy_16@hotmail.com

Blairs. Ag Cattle Co.

Kevin & Noreen Blair; Darren & Deb Blair
Box 610, Lanigan, SK S0K 2M0
Kevin Blair: 306-365-7922 kevin@blairs.ag

Golden Oak Livestock

Bowden, AB
Tom McNeely: 780-679-7220
Email: tom@goldenoaklivestock.com

Auctioneer

Chris Poley 306-220-5006

Sale Day Phones

House 306-487-2670
Karl Lischka 306-487-7794
Karen Lischka 306-487-7793
Cory Lischka 306-471-7733
Corey Lees 306-577-9971
Jeremy Brooks 306-485-8003
Blayne Brooks 306-485-7063
Blake Brooks 306-485-8488
Tom McNeely 780-679-7220

Sale Staff

Ringside

Shane Michelson 403-363-9973
Ben Wright 519-374-3335
Alex Acheson, American Hereford Association 785-366-1185

Insurance Representative

Bonnie Thompson, Alameda Agencies 306-489-2258

Trucking Representative

H.S. Knill Co. Ltd. 877-442-3106

Accommodations

Bear Claw Casino & Lodge, Kenosee, SK 306-577-4588
Days Inn, Estevan, SK 306-634-6456
Chaparral Inn, Arcola, SK 306-455-2275
Super 8, Estevan, SK 306-634-8585
Ramada, Carlyle, SK 306-453-2686
Western Star, Carlyle, SK 306-453-2700

Catalogue Created By

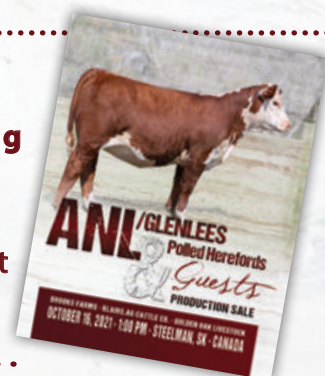
Today's Publishing 306-933-4200

Watch and bid live at:



To ensure a catalogue
please remember to bring
this one to the sale...
Thanks!

View the catalogue online at
www.buyagro.com



ANL POLLED HEREFORDS | HEIFER CALVES

ANL Polled Herefords

Karl & Karen Lischka

Box 14, Steelman, SK, S0C 2J0

Phone: 306-487-2670 Cell: 306-487-7794 Email: lischka@sasktel.net

Visit www.anlpolledherefords.com

Cory, Brenden & Cayden Lischka: 306-471-7733

PROGRESS BY COMPARISON

We feel this year's Lot 1A and 1B are special. Two flush mates that are phenotypically and genotypically similar. We flushed ANL 115F to three different sires and the group of flush mates are very uniform in type. Nine of these calves were in the South East Field Day winning Junior Heifer Calf, Champion and Reserve Heifer Calf, Junior Bull Calf Champion and Reserve Junior Bull Calf Champion with the two Jr. Champion going on to be chosen Grand and Reserve Champion Bull. Jada 115F having the ability to inflect her progeny into offspring with such a high consistency is rare.



ANL ACDT 24E JADA 115F ET 144J

1A
PC03084072

KKL 144J

ANL ACDT 24E **JADA** 115F ET 144J {DLF HYF IEF MSUDF}
March 6, 2021 Polled Female

H BK CCC SR GAME CHANGER ET KJ HVH 33N REDEEM 485T ET (DLF HYF IEF) TH 745A 7B START ME UP 71D REMITALL-W START ME UP ET 7B (DLF HYF IEF MDF)
HAROLDSON'S JVJ ROYAL 24E (DLF HYF IEF MSUDF) NJW 78P 63N LADYSPORT 51W ET **ANL 71D JADA 123C 115F** (DLF HYF IEF MSUDF) RANGELINE 11Y MISS WORLD 745A
 HAROLDSON'S AD JESSICA 48Y 13B (DLF HYF IEF MSUDF) HAROLDSON'S WS JESSICA 4T 60X ANL 91Z JADA 107Y 123C NJW 59R 88X RIBEYE 91Z (DLF HYF IEF) GOBLE JADA 107Y (DLF HYF IEF)

BW	EPDs	CE	BW	WW	YW	Milk	TM
83 lbs.		-4.0	4.3	66.8	107.6	27.9	61.3

Jada 144J is long in body and also has that extra extension in her front third. She is structurally sound, big topped and hiped. The sire Haroldsons JVJ Royal 24E was Reserve Champion Polled Hereford Bull at the 2019 Canadian Western Agribition He has clicked exceptionally well with 115F.



KKL 167J- MATERNAL SISTER TO LOT 1A & 1B



KKL 132J- FULL SISTER TO LOT 1A & 1B



ANL ACDT 24E JADA 115F ET 137J

1B

PC03084070

KKL 137J

ANL ACDT 24E **JADA** 115F ET 137J {DLF HYF IEF MSUDF}
March 4, 2021 Polled Female

H BK CCC SR GAME CHANGER ET
HAROLDSON'S JVJ ROYAL 24E {DLF HYF IEF MSUDF} HAROLDSON'S WLC RHINO ET 48Y {DLF HYF IEF} TH 745A 7B START ME UP 71D
HAROLDSON'S AD JESSICA 48Y 13B {DLF HYF IEF MSUDF} HAROLDSON'S WS JESSICA 4T 60X **ANL 71D JADA 123C 115F** {DLF HYF IEF MSUDF} ANL 91Z JADA 107Y 123C REMITALL-W START ME UP ET 7B {DLF HYF IEF MDF} RANGELINE 11Y MISS WORLD 745A NJW 59R 88X RIBEYE 91Z {DLF HYF IEF} GOBLE JADA 107Y {DLF HYF IEF}

BW	EPDs	CE	BW	WW	YW	Milk	TM
86 lbs.		-8.6	7.2	72.4	116.2	29.1	65.3

Jada 137J has that extra dimension in her lower third. She is great fronted and has that tremendous width throughout. She has that broody look even at this young age.

Owned with Danny & Calvin Fornwald, AXA Polled Herefords, and Golden Oak Livestock



KKL 115F- DAM OF LOT 1A & 1B



TH 71D- MGS OF LOT 1A & 1B

ANL POLLED HEREFORDS | HEIFER CALVES



ANL 71D JACKIE 7F 13J



GLENLEES DBK 156C JACKIE 7F- DAM OF LOT 2

2

PC03083349

KKL 13J

January 20, 2021

ANL 71D **JACKIE** 7F 13J
Polled Female

REMITALL-W START ME UP ET 7B (DLF HYF IEF MDF)
TH 745A 7B START ME UP 71D
RANGELINE 11Y MISS WORLD 745A

CB 57U CAN DOO 102Y (DLF HYF IEF MSUDF)
REMITALL-WEST MARVEL ET 76Y (DLF HYF IEF MDF)
BOYD WORLDWIDE 9050 ET (DLF HYF IEF MDF)
RANGELINE 60S TEAR DROP 11Y

NJW 103Y 174X DIABLO 156C ET
GLENLEES DBK 156C JACKIE 7F
GLENLEES DBK 85R JACKIE 127Z

NJW 76S 4037 DURANGO SPIRIT 174X (DLF HYF IEF)
NJW 101U 100W SPIRITQUEEN103Y
WLB SQUARE 7M 85R
GLENLEES 180N JACKIE 174R

BW	EPDs	CE	BW	WW	YW	Milk	TM
79 lbs.		1.7	2.7	55.4	88.9	21.2	48.9



ANL 71D FANCY 30C 12J



MW 30C- DAM OF LOT 3

3

PC03083348

KKL 12J

January 20, 2021

ANL 71D **FANCY** 30C 12J
Polled Female

REMITALL-W START ME UP ET 7B (DLF HYF IEF MDF)
TH 745A 7B START ME UP 71D
RANGELINE 11Y MISS WORLD 745A

CB 57U CAN DOO 102Y (DLF HYF IEF MSUDF)
REMITALL-WEST MARVEL ET 76Y (DLF HYF IEF MDF)
BOYD WORLDWIDE 9050 ET (DLF HYF IEF MDF)
RANGELINE 60S TEAR DROP 11Y

TDP CROSSOVER Z400
MOHICAN FANCY 30C
GV CMR Y247 MS 1061 A424

TH 133U 719T UPGRADE 69X (DLF HYF IEF)
ASH LIL PEANUT 203P (DLF HYF IEF)
ALH 0850 PAYNE 1061
GRANDVIEW CMR 86P MISS Y247

BW	EPDs	CE	BW	WW	YW	Milk	TM
76 lbs.		4.8	1.2	54.6	90.6	21.2	48.5

4

Randi 11J's dam is sired by P606, the cow maker. 10A is also the grandam of Lot 5. 11J has the genetics to make her a consistent producer.



ANL 71D RANDI 10A 11J

4

PC03083347

KKL 11J

January 20, 2021

ANL 71D **RANDI** 10A 11J
Polled Female

REMITALL-W START ME UP ET 7B (DLF HYF IEF MDF)
TH 745A 7B START ME UP 71D
RANGELINE 11Y MISS WORLD 745A

CB 57U CAN DOO 102Y (DLF HYF IEF MSUDF)
REMITALL-WEST MARVEL ET 76Y (DLF HYF IEF MDF)
BOYD WORLDWIDE 9050 ET (DLF HYF IEF MDF)
RANGELINE 60S TEAR DROP 11Y

PW VICTOR BOOMER P606 MDF
ANL P606 RANDI 10A
ANL 53S RANDI 106U

REMITALL BOOMER 46B
PW VICTORIA 964 8114
ANL SBS 36N SPADE ET 53S
TIL-TOBA RANDI 18C 40M

BW	EPDs	CE	BW	WW	YW	Milk	TM
90 lbs.		-5.0	4.7	60.4	95.8	22.8	53.0

Randi 188J is the youngest 71D. She has not taken a back seat to older sisters. Big middle and sound to the ground.



ANL 71D RANDI 12C 188J

5

PC03083395

KKL 188J

March 20, 2021

ANL 71D **RANDI** 12C 188J
Polled Female

REMITALL-W START ME UP ET 7B (DLF HYF IEF MDF)
TH 745A 7B START ME UP 71D
RANGELINE 11Y MISS WORLD 745A

CB 57U CAN DOO 102Y (DLF HYF IEF MSUDF)
REMITALL-WEST MARVEL ET 76Y (DLF HYF IEF MDF)
BOYD WORLDWIDE 9050 ET (DLF HYF IEF MDF)
RANGELINE 60S TEAR DROP 11Y

TH 122 71I VICTOR 521X ET (DLF HYF IEF)
ANL 521X RANDI 10A 12C
ANL P606 RANDI 10A

DRF JWR PRINCE VICTOR 71I
KBCR 19D DOMINETTE 122 (DLF IEF)
PW VICTOR BOOMER P606 (MDF)
ANL 53S RANDI 106U

BW	EPDs	CE	BW	WW	YW	Milk	TM
90 lbs.		-5.8	5.2	68.4	107.8	22.6	56.8



ANL 206E DARLA 2D 64J

Our only Bottom Line heifer calf in the sale but she is the right kind. Her dam is a real consistent producer. Don't miss this young female, she should have a bright future.

6

PC03083364

KKL 64J

February 7, 2021

ANL 206E DARLA 2D 64J
Polled Female

TH 403A 475Z PIONEER 358C ET
TH 13Y 358C BOTTOM LINE 206E
TH 54W 719T BETH 13Y

TH 89T 755T STOCKMAN 475Z
TH 71U 17Y RITA 403A
TH 122 71I VICTOR 719T (DLF HYF IEF MDF)
TH 6S 45P BETH 54W

RVP 100W BILLIONAIRE 73B (DLF HYF IEF MSUDF)
JHF 73B DARLA 2D (DLF HYF IEF MSUDF)
DJF R23 R12 WYLA 942 (DLF HYF IEF)

NJW 73S M326 TRUST 100W ET (DLF HYF IEF MDF)
GLENVIEW 7425 BERNADETTE W34
SHF RELIANT M33 R23
HHF N330 R12 RASE

BW	EPDs	CE	BW	WW	YW	Milk	TM
89 lbs.		-5.5	6.1	72.0	114.9	25.9	61.9



ANL 8Y AVERI MAY 50E 26J

We used Homegrown for the first time this year, and he did a good job. 26J has the growth, is wide topped and long bodied. We think she will make an impressive cow.

7

PC03084509

KKL 26J

January 28, 2021

ANL 8Y AVERI MAY 50E 26J
Polled Female

SHF WONDER M326 W18 ET (DLF HYF IEF MDC)
NJW 73S W18 HOMEGROWN 8Y ET (DLF HYF IEF MDC)
NJW P606 72N DAYDREAM 73S (DLF HYF IEF)

KCF BENNETT 3008 M326 (DLF HYF IEF MDF)
SHF GOVERNESS 236G L37
PW VICTOR BOOMER P606 MDF)
NJW 94J DEW 72N (DLF HYF IEF)

ANL 17A HI TECH 58W 80C (DLF HYF IEF)
ANL 80C AVERI MAY 2348 50E
H W4 AVERI MAY 2348 ET

TH 113W 11X HI-TECH 17A (DLF HYF IEF MSUDF)
MOHICAN VIOLET 58W (DLF HYF IEF)
H WCC/WB 668 WYARNO 9500 ET (DLF HYF IEF)
K&B SULTANA 7151T

BW	EPDs	CE	BW	WW	YW	Milk	TM
88 lbs.		0.1	3.7	54.9	90.1	37.4	64.9

6

6



ANL 206E RENEE 69A 104H

8

PC03071836

KKL 104H

February 17, 2020

ANL 206E **RENEE** 69A 104H
Polled Female

TH 403A 475Z PIONEER 358C ET
TH 13Y 358C BOTTOM LINE 206E
TH 54W 719T BETH 13Y

TH 89T 755T STOCKMAN 475Z
TH 71U 17Y RITA 403A
TH 122 71I VICTOR 719T {DLF HYF IEF MDF}
TH 6S 45P BETH 54W

TH 71U 719T MR HEREFORD 11X {DLF HYF IEF}
ANL 11X RENEE 92R ET 69A {DLF HYF IEF}
ANL 36N RENEE 92R

TH 122 71I VICTOR 719T {DLF HYF IEF MDF}
TH 7N 45P RITA 71U {DLF HYF IEF}
HF 4L BEYOND 36N
ANL 832W RENEE 11H

BW	EPDs	CE	BW	WW	YW	Milk	TM
86 lbs.		-4.7	5.8	67.6	111.1	26.7	60.5

Renee comes from the top cut of our bred heifers. Stylish and extremely sound in her structure. Her grandmother was Champion Yearling at Agribition. The 206E daughters have very good udders with more than enough milk.
Bred AI May 5, 2021 to GHC C5 Attention155E. Preg checked safe to AI date.



TH 13Y 358C BOTTOM LINE 206E



ANL 206E MIRIAH 54B 94H

9

PC03071813

KKL 94H

February 11, 2020

ANL 206E **MIRIAH** 54B 94H
Polled Female

TH 403A 475Z PIONEER 358C ET
TH 13Y 358C BOTTOM LINE 206E
TH 54W 719T BETH 13Y

TH 89T 755T STOCKMAN 475Z
TH 71U 17Y RITA 403A
TH 122 71I VICTOR 719T (DLF HYF IEF MDF)
TH 6S 45P BETH 54W

BOYD MASTERPIECE 0220
ANL 0220 MIRIAH 36Y ET 54B (DLF HYF IEF)
ANL 45P MIRIAH 36Y (DLF HYF IEF)

SHF RIB EYE M326 R117 (DLF HYF IEF)
SSF P606 MS VICTOR 803
NJW FHF 9710 TANK 45P (DLF HYF IEF MDF)
ANL 98K MIRIAH 153S

BW	EPDs	CE	BW	WW	YW	Milk	TM
77 lbs.		-4.0	4.4	64.3	107.8	25.8	58.0

This Bottom Line female is very long sided with a broody look to her. Her dam and grandam are in our donor dam program. A maternal sister was purchased by Don Krueger.

Exposed to GRH Z426 Excede 14H from May 28, 2021 to Aug 4/, 2021. Preg checked safe.





ANL 206E PLUS 424B 102H

10

PC03071834

KKL 102H

February 16, 2020

ANL 206E **PLUS** 424B 102H
Polled Female

TH 403A 475Z PIONEER 358C ET
TH 13Y 358C BOTTOM LINE 206E
TH 54W 719T BETH 13Y

TH 89T 755T STOCKMAN 475Z
TH 71U 17Y RITA 403A
TH 122 71I VICTOR 719T {DLF HYF IEF MDF}
TH 6S 45P BETH 54W

NJW 98S 100W HANDSHAKE 82Y {MDF}
MOHICAN PLUS 424B
MOHICAN PLUS 409T ET

NJW 73S M326 TRUST 100W ET {DLF HYF IEF}
NJW 9126J DEW DOMINO 98S {DLF HYF IEF}
REMITALL PATRIOT ET 13P
MOHICAN PLUS 107M

BW	EPDs	CE	BW	WW	YW	Milk	TM
80 lbs.		-3.5	4.9	67.0	112.9	27.0	60.5

102H is the power female of our bred heifer offering. Big topped, and massive middle, with plenty of natural thickness. Big footed and very free moving. This female will grab your attention!

Bred AI on April 28th to GHC C5 Attention155E. Preg checked safe to AI date



ANL POLLED HEREFORDS | BRED HEIFERS



ANL 206E DARLING 32D 65H

65H is very short marked, dark red with goggle eyes. This female has the capacity, soundness and is developing a very special looking udder. Don't miss this eye appealing heifer!

Bred AI on May 30th to Glenlees 27C Kreed 3H. Preg checked safe to AI date.

11

PC03071802

KKL 65H

February 3, 2020

ANL 206E **DARLING** 32D 65H
Polled Female

TH 403A 475Z PIONEER 358C ET
TH 13Y 358C BOTTOM LINE 206E
TH 54W 719T BETH 13Y

TH 89T 755T STOCKMAN 475Z
TH 71U 17Y RITA 403A
TH 122 71I VICTOR 719T {DLF HYF IEF MDF}
TH 6S 45P BETH 54W

NJW 78P TWENTYTWELVE 190Z ET
WLL DARLING 32D
WLL YEN 29Y

NJW 73S M326 TRUST 100W ET {DLF HYF IEF}
NJW BW LADYSPORT DEW 78P ET {DLF HYF IEF}
WLB GLOBAL 72M 50S
GLENAMORE PREMIER SPICE 1U

BW	EPDs	CE	BW	WW	YW	Milk	TM
78 lbs.		-3.6	4.8	66.6	111.5	20.6	53.9



ANL C 206E XCALIBER 25D 39H

This is a high volume female with lots of bone. She is a very easy keeping heifer. Her dam does a great job every year. Being bred to Glenlees 3H should work well.

Bred AI May 5 to Glenlees 27C Kreed 3H. Preg checked safe to AI date.

12

PC03071606

KKL 39H

January 30, 2020

ANL C 206E **XCALIBER** 25D 39H
Polled Female

TH 403A 475Z PIONEER 358C ET
TH 13Y 358C BOTTOM LINE 206E
TH 54W 719T BETH 13Y

TH 89T 755T STOCKMAN 475Z
TH 71U 17Y RITA 403A
TH 122 71I VICTOR 719T {DLF HYF IEF MDF}
TH 6S 45P BETH 54W

TH 89T 743 UNTAPPED 425X ET {DLF HYF IEF}
ANL C 425X XCALIBER 26X 25D
TIL-TOBA XCALIBER 315U 26X

CRR ABOUT TIME 743 {DLF HYF IEF MDF}
TH 16G 20N GEMINI 89T {DLF HYF IEF}
GH ADAMS 179R STANLEY 180U
XLP CLF 61P SARA 315U

BW	EPDs	CE	BW	WW	YW	Milk	TM
70 lbs.		0	3.5	59.6	103.2	21.7	51.5

10

This female puts a lot of things together. She is moderate framed, and extends through her front end. The cow family in 73H's pedigree has longevity. Take a look at her udder and teats. Very acceptable EPDs

Exposed to GRH Z426 Excede 14H from May 2, 2021 to August. 4, 2021.
Preg checked safe early in exposure.



ANL 71D TAMMY 94D 73H

13

PC03071804

KKL 73H

February 4, 2020

ANL 71D **TAMMY** 94D 73H
Polled Female

REMITALL-W START ME UP ET 7B {DLF HYF IEF MDF}
TH 745A 7B START ME UP 71D
RANGELINE 11Y MISS WORLD 745A

CB 57U CAN DOO 102Y {DLF HYF IEF MSUDF}
REMITALL-WEST MARVEL ET 76Y {DLF HYF IEF MDF}
BOYD WORLDWIDE 9050 ET {DLF HYF IEF MDF}
RANGELINE 60S TEAR DROP 11Y

TH 113W 11X HI-TECH 17A {DLF HYF IEF MSUDF}
ANL 17A TAMMY 47Y 94D
MA 744T TAMMY 16U 47Y {DLF HYF IEF}

TH 71U 719T MR HEREFORD 11X {DLF HYF IEF}
TH 105S 755T GEMINI 113W {DLF HYF IEF}
JJPH 910J 36N ARSENAL 744T
MEADOW-ACRES HR TAMMY ET 16U

BW	EPDs	CE	BW	WW	YW	Milk	TM
73 lbs.		3.0	2.2	55.2	90.4	23.7	51.3

122 is a nice made 71D daughter that has a strong maternal pedigree. Her highly productive dam raises a good one every year. This heifer has an early AI service.

Bred AI on April 24th to ANL 17A Hi Tech 58W 80C. Preg checked safe to AI date.



ANL MEG 71D HANNAH 92B 122H

14

PC03071844

KKL 122H

February 27, 2020

ANL MEG 71D **HANNAH** 92B 122H
Polled Female

REMITALL-W START ME UP ET 7B {DLF HYF IEF MDF}
TH 745A 7B START ME UP 71D
RANGELINE 11Y MISS WORLD 745A

CB 57U CAN DOO 102Y {DLF HYF IEF MSUDF}
REMITALL-WEST MARVEL ET 76Y {DLF HYF IEF MDF}
BOYD WORLDWIDE 9050 ET {DLF HYF IEF MDF}
RANGELINE 60S TEAR DROP 11Y

ANL P606 UNIVERSE ET 17U
ANL MEG 17U HANNAH 96Z 92B
ANL MEG 521X HANNAH 102X 96Z

PW VICTOR BOOMER P606 {MDF}
ANL 57G MINDY 14L
TH 122 71I VICTOR 521X ET {DLF HYF IEF}
ANL MEG P606 HANNAH 102X

BW	EPDs	CE	BW	WW	YW	Milk	TM
76 lbs.		-1.9	2.8	55.6	90.2	20.0	47.8

ANL POLLED HEREFORDS | BRED HEIFERS



ANL C 420A BOOMAH 94F 76H

Phenotypically this heifer puts it all together. She is structurally correct in her makeup, with enough muscle pattern and style. She also has the short marking and dark colour to complete the package.

Bred AI on April 28, 2021 to GHC C5 Attention 155E. Preg checked safe to AI date.

15

PC03071806

KKL 76H

FEBRUARY 5, 2020

ANL C 420A BOOMAH 94F 76H
Polled Female

TH 22R 16S LAMBEAU 17Y
TH 71U 17Y MOUNTAINEER 420A (DLF HYF IEF)
TH 7N 45P RITA 71U (DLF HYF IEF)

TH 121L 63N TUNDRA 16S
TH 62N 3L KELSEY 22R
NJW FHF 9710 TANK 45P (DLF HYF IEF MDF)
TTH 814H 3L RITA 7N

ANL 17A HI TECH 58W 80C (DLF HYF IEF)
ANL C 80C BOOMAH 103Y 94F
BLAIR-ATHOL 13K BOOMAH 103Y

TH 113W 11X HI-TECH 17A (DLF HYF IEF MSUDF)
MOHICAN VIOLET 58W (DLF HYF IEF)
BLAIR-ATHOL 65F ON LINE 13K
RVP 80P UTMOST 46U

BW	EPDs	CE	BW	WW	YW	Milk	TM
65 lbs.		7.7	0.3	45.7	74.2	21.8	44.7



ANL TD 420A SPRINT 51F 11H

11H is tanky and probably the easiest keeping heifer in this group. Udder quality and maternal strength runs deep in this pedigree. Bred early too. This package should be a money maker!

Owned with Trevor and Christina Deren.

Bred AI on April 29, 2021 to Glenlees 27C Kreed 3H. Preg checked safe to AI date

16

PC03071511

KKL 11H

January 23, 2020

ANL TD 420A SPRINT 51F 11H
Polled Female

TH 22R 16S LAMBEAU 17Y
TH 71U 17Y MOUNTAINEER 420A (DLF HYF IEF)
TH 7N 45P RITA 71U DLF HYF IEF

TH 121L 63N TUNDRA 16S
TH 62N 3L KELSEY 22R
NJW FHF 9710 TANK 45P (DLF HYF IEF MDF)
TH 814H 3L RITA 7N

TH 745A 7B START ME UP 71D
ANL 71D SPRINT Z10 51F
GLENVIEW 69X SPIRIT Z10

REMITALL-WSTART ME UP ET 7B (DLF HYF IEF MDF)
RANGELINE 11Y MISS WORLD 745A
TH 133U 719T UPGRADE 69X (DLF HYF IEF)
GLENVIEW 7425 SPIRIT W40

BW	EPDs	CE	BW	WW	YW	Milk	TM
71 lbs.		6.0	1.6	53.1	83.7	19.8	46.4

17

ANL C 420A CELEBRITY 96F 135H
 PC03085525 KKL 135H March 5, 2020 Polled Female

TH 22R 16S LAMBEAU 17Y
TH 71U 17Y MOUNTAINEER 420A (DLF HYF IEF)
 TH 7N 45P RITA 71U (DLF HYF IEF)

TH 122 71I VICTOR 521X ET (DLF HYF IEF)
ANL C 521X CELEBRITY 26D 96F
 ANL C 425X CELEBRITY 34A 26D

TH 121L 63N TUNDRA 16S
 TH 62N 3L KELSEY 22R
 NJW FHF 9710 TANK 45P (DLF HYF IEF MDF)
 TTH 814H 3L RITA 7N
 DRF JWR PRINCE VICTOR 71I
 KBCR 19D DOMINETTE 122 (DLF IEF)
 TH 89T 743 UNTAPPED 425X ET (DLF HYF IEF)
 MIL-WRAY CELEBRITY 34A

BW	EPDs	CE	BW	WW	YW	Milk	TM
80 lbs.		1.0	3.3	56.9	89.7	20.1	48.6

Another Mountaineer female that has the maternal genetics to make her a highly productive cow. She is big hiped and long spined.

Bred AI on May 4th to Glenlees 27C Kreed 3H. Preg checked safe to AI date.



ANL C 420A CELEBRITY 96F 135H

18

ANL 83F COREY'S 162D 196H
 PC03071879 KKL 196H April 2, 2020 Polled Female

TH 745A 7B START ME UP 71D
ANL 71D START ME UP 51A 83F (DLF HYF IEF)
 JHF LINDA 51A (DLF HYF IEF MSUDF)

TH 113W 11X HI-TECH 17A (DLF HYF IEF MSUDF)
ANL 17A COREY'S 49W 162D
 ANL 7R COREY'S 49W

REMITALL-W START ME UP ET 7B (DLF HYF IEF MDF)
 RANGELINE 11Y MISS WORLD 745A
 ANL 83T ELI ET 8X (DLF HYF IEF)
 MICGIL'S LINDA 24R 36U
 TH 71U 719T MR HEREFORD 11X (DLF HYF IEF)
 TH 105S 755T GEMINI 113W (DLF HYF IEF)
 FCC 36N ABSOLUTE 7R
 COREY'S ONLINE 138N

BW	EPDs	CE	BW	WW	YW	Milk	TM
75 lbs.		1.3	3.2	54.2	88.3	22.3	49.4

196H has a real feminine look to her. She is freckle faced with lots of capacity and has that extra length in her front end. Her dam does a great job every year.

Bred AI on May 11, 2021 to Glenlees 27C Kreed 3H. Preg checked safe to AI date.



ANL 83F COREY'S 162D 196H

19

ANL CL 84F WESTWIND 201F 211H
 PC03071882 KKL 211H April 8, 2020 Polled Female

TH 745A 7B START ME UP 71D
ANL C 71D START ME UP 17Z 84F (DLF HYF IEF)
 TIL-TOBA ZULA 39S 17Z

ANL C 17A HI TECH 19Y 79C (DLF HYF IEF)
ANL CL 79C WESTWIND 74D 201F
 ANL CL 145R WESTWIND 45W 74D

REMITALL-W START ME UP ET 7B (DLF HYF IEF MDF)
 RANGELINE 11Y MISS WORLD 745A
 IL-TOBA SIGN UP 11J 11S (DLF HYF IEF)
 TIL-TOBA STAR 31K 39S
 TH 113W 11X HI-TECH 17A (DLF HYF IEF MSUDF)
 ANL C 743 NANCY 19Y
 GRANDVIEW 7OAKS SONORA 145R (DLF HYF IEF)
 AMOHICAN WESTWIND 45W

BW	EPDs	CE	BW	WW	YW	Milk	TM
80 lbs.		-1.6	4.9	58.7	96.6	24.6	54.0

211H has a pedigree filled with really top end udders as her EPD number indicates. She should have the tools to make a productive female.

Exposed to GRH Z426 Excede 14H from June 8, 2021 to August 4, 2021
 Preg checked early in service.



ANL CL 84F WESTWING 201F 211H

ANL POLLED HEREFORDS | BRED HEIFERS



ANL R 83F LADY 99E 221H

221H is one of the deepest sided females in the sale. Long from end to end with enough bone and muscle. Very free moving and sound. She also has an early AI service.

Bred AI on April 30, 2021 to GHC C5 Attention 155E. Preg checked safe to AI date.

20

PC03071885

KKL 221H

April 16, 2020

ANL R 83F LADY 99E 221H
Polled Female

TH 745A 7B START ME UP 71D
ANL 71D START ME UP 51A 83F (DLF HYF IEF)
JHF LINDA 51A (DLF HYF IEF MSUDF)

REMITALL-W START ME UP ET 7B (DLF HYF IEF MDF)
RANGLINE 11Y MISS WORLD 745A
ANL 83T ELI ET 8X (DLF HYF IEF)
MICGIL'S LINDA 24R 36U
TH 22R 16S LAMBEAU 17Y

TH 71U 17Y MOUNTAINEER 420A (DLF HYF IEF)
ANL R 420A LADY 131C 99E
ANL R 17A LADY 1238 131C

TH 7N 45P RITA 71U (DLF HYF IEF)
TH 113W 11X HI-TECH 17A (DLF HYF IEF MSUDF)
H RW LADY REDEEM 1238 ET

BW	EPDs	CE	BW	WW	YW	Milk	TM
80 lbs.		-0.1	3.6	61.4	98.9	22.1	52.8



ANL 83F MELANIE 3756A 131H

Melanie is out of a very productive Wascana cow that has lots of milk and a great udder to boot.

Bred AI on May 26, 2021 to Glenlees 27C Kreed 3H. Preg checked safe to AI date.

21

PC03071848

KKL 131H

March 4, 2020

ANL 83F MELANIE 3756A 131H
Polled Female

TH 745A 7B START ME UP 71D
ANL 71D START ME UP 51A 83F (DLF HYF IEF)
JHF LINDA 51A (DLF HYF IEF MSUDF)

REMITALL-W START ME UP ET 7B (DLF HYF IEF MDF)
RANGLINE 11Y MISS WORLD 745A
ANL 83T ELI ET 8X (DLF HYF IEF)
MICGIL'S LINDA 24R 36U

SQUARE-D AXLE 30X (DLF HYF IEF)
WCC 30X MELANIE 3756A
SQUARE-D MELANIE 756

SQUARE-D LOGAN 209P
SQUARE-D NADDIA 793R
SQUARE-D MILESTONE ET 44P (DLF HYF IEF)
SQUARE-D LEXUS 765P

BW	EPDs	CE	BW	WW	YW	Milk	TM
88 lbs.		-3.0	4.3	56.0	90.5	22.9	50.9

These granddaughters of the Maple cow family are making great brood cows. Lots of body mass and easy doing ability. Very good udders and milk flow also.

Bred to GRH Z426 Excede 14H on May 9, 2021. Preg checked safe to that date.



ANL GC 132E **WISTERIA** 28B 215H

22

PC03071883

KKL 215H

April 10, 2020

ANL GC 132E **WISTERIA** 28B 215H
Polled Female

ANL 17A HI TECH 58W 80C (DLF HYF IEF)

ANL 80C HI TECH 86R 132E (DLF HYF IEF MSUDF)

ANL 7N MAPLE 86R (DLF HYF IEF)

TH 113W 11X HI-TECH 17A (DLF HYF IEF MSUDF)

MOHICAN VIOLET 58W (DLF HYF IEF)

ANL 2K SPECIALIST 7N

ANL 32K MAPLE 47N (DLF HYF IEF)

H SWSN REDEEM 2429 ET

BROOKS 2429 WISTERIA 28B

EJM MISS WISTERIA 346R 46W (DLF HYF IEF)

KJ HVH 33N REDEEM 485T ET (DLF HYF IEF)

K&B LADY SENTRY 8090U

REMITALL ROUTE 66 ET 346R

EJM MISS TAKODA 201N 3T

BW	EPDs	CE	BW	WW	YW	Milk	TM
83 lbs.		-3.5	5.4	62.2	100.8	23.6	54.7

169H is a typical daughter of 132E, having volume and soundness is standard to this sire. Her dam has stood the test of time and should pass along her longevity.

Bred AI on June 2, 2021 to Glenlees 27C Kreed 3H. Preg checked safe to AI date



ANL C 132E **HOTSEY** 13W 169H

23

PC03071866

KKL 169H

March 21, 2020

ANL C 132E **HOTSEY** 13W 169H
Polled Female

ANL 17A HI TECH 58W 80C (DLF HYF IEF)

ANL 80C HI TECH 86R 132E (DLF HYF IEF MSUDF)

ANL 7N MAPLE 86R (DLF HYF IEF)

TH 113W 11X HI-TECH 17A (DLF HYF IEF MSUDF)

MOHICAN VIOLET 58W (DLF HYF IEF)

ANL 2K SPECIALIST 7N

ANL 32K MAPLE 47N (DLF HYF IEF)

MEADOW-ACRES CONNECTED 13K 86R

TIL-TOBA HOTSEY 27L 13W

TIL-TOBA TERRI 3W 27L

BLAIR-ATHOL 65F ON LINE 13K

MEADOW-ACRES 66E ADA 102M 5G

WALPOLE TANDEM 32F

WKJ RUSSETT 94P 3W

BW	EPDs	CE	BW	WW	YW	Milk	TM
91 lbs.		-2.9	6.3	58.2	94.1	22.8	51.9

ANL POLLED HEREFORDS | BRED HEIFERS



ANL C 114F TESSA 119D 198H

24

ANL C 114F TESSA 119D 198H
 PC03071880 KKL 198H April 3, 2020 Horned Female

ANL C HAR T100 TAHOE 86 ET 23B (DLF HYF IEF MSUDF MDF) SHF TAHOE R117 T100 (DLF HYF IEF MSUDF)
 ANL 7N MAPLE 86R (DLF HYF IEF)
ANL 23B TAHOE 69A 114F (DLF HYF IEF) TH 71U 719T MR HEREFORD 11X (DLF HYF IEF)
 ANL 11X RENEE 92R ET 69A (DLF HYF IEF) ANL 36N RENEE 92R
 TH 89T 743 UNTAPPED 425X ET (DLF HYF IEF) CRR ABOUT TIME 743 (DLF HYF IEF MDF)
ANL C 425X TESSA 13A 119D TH 16G 20N GEMINI 89T (DLF HYF IEF)
 MIL-WRAY TESSA 13A HARVIE TRIUMPH 40T (DLF HYF IEF)
 MIL-WRAY CORA 15X

BW	EPDs	CE	BW	WW	YW	Milk	TM
90 lbs.		-5.7	7.0	63.6	104.9	24.6	56.4

198H has a dam that gets it done, with a top bull again this year. 198H is a very well made heifer that is very free moving.

Bred AI on May 22, 2021 to Glenlees 27C Kreed 3H. Preg checked safe to AI date.



ANL 114F LINDA 9D 225H

25

ANL 114F LINDA 9D 225H
 PC03071887 KKL 225H April 24, 2020 Polled Female

ANL C HAR T100 TAHOE 86 ET 23B (DLF HYF IEF MSUDF MDF) SHF TAHOE R117 T100 (DLF HYF IEF MSUDF)
 ANL 7N MAPLE 86R (DLF HYF IEF)
ANL 23B TAHOE 69A 114F (DLF HYF IEF) TH 71U 719T MR HEREFORD 11X (DLF HYF IEF)
 ANL 11X RENEE 92R ET 69A (DLF HYF IEF) ANL 36N RENEE 92R
 SHF WONDER M326 W18 ET (DLF HYF IEF MDC)
 NJW 73S W18 HOMETOWN 10Y ET (DLF HYF IEF MDC) NJW P606 72N DAYDREAM 73S (DLF HYF IEF)
ANL 10Y LINDA 51A 9D (MDF) ANL 83T ELI ET 8X (DLF HYF IEF)
 JHF LINDA 51A (DLF HYF IEF MSUDF) MICGIL'S LINDA 24R 36U

BW	EPDs	CE	BW	WW	YW	Milk	TM
86 lbs.		-3.5	6.4	64.6	108.2	29.5	61.8

225H is out of a real solid cow family. A brother was used for two year in herd. Her dam is a front pasture cow. 225H is almost a May but has bred up early.

Exposed to GRH Z426 Excede 14H from June 8, 2021 to August 4, 2021. Preg checked safe.



ANL DD 132E TAMMY 35D 191H

26

ANL DD 132E TAMMY 35D 191H
 PC03071875 KKL 191H March 30, 2020 Polled Female

ANL 17A HI TECH 58W 80C (DLF HYF IEF) TH 113W 11X HI-TECH 17A (DLF HYF IEF MSUDF)
 MOHICAN VIOLET 58W (DLF HYF IEF)
ANL 80C HI TECH 86R 132E (DLF HYF IEF MSUDF) ANL 2K SPECIALIST 7N
 ANL 7N MAPLE 86R (DLF HYF IEF) ANL 32K MAPLE 47N (DLF HYF IEF)
 TH 71U 719T MR HEREFORD 11X (DLF HYF IEF)
 TH 113W 11X HI-TECH 17A (DLF HYF IEF MSUDF) TH 105S 755T GEMINI 113W (DLF HYF IEF)
ANL 17A TAMMY 96A 35D ANL P606 UNIVERSE ET 17U
 ANL 17U TAMMY 96A MA 744T TAMMY 16U 47Y (DLF HYF IEF)

BW	EPDs	CE	BW	WW	YW	Milk	TM
81 lbs.		-3.7	4.4	55.3	90.8	25.8	53.5

This is a definite standout heifer, with her balance, mass and soundness. Check out her EPDs, very favourable all the way. Her dam and grandam are both soft made females with super udders.

Bred AI on May 11, 2021 to Glenlees 27C Kreed 3H Preg checked safe to AI date.

27

PC03085526 KKL 226H ANL C 114F LUCY 97E 226H April 25, 2020 Polled Female

ANL C HAR T100 TAHOE 86 ET 23B (DLF HYF IEF MSUDF MDF) SHF TAHOE R117 T100 (DLF HYF IEF MSUDF)
 ANL 7N MAPLE 86R (DLF HYF IEF)
ANL 23B TAHOE 69A 114F (DLF HYF IEF) TH 71U 719T MR HEREFORD 11X (DLF HYF IEF)
 ANL 11X RENEE 92R ET 69A (DLF HYF IEF) ANL 36N RENEE 92R
 TH 113W 11X HI-TECH 17A (DLF HYF IEF MSUDF)
 ANL 17A HI TECH 58W 80C (DLF HYF IEF) MOHICAN VIOLET 58W (DLF HYF IEF)
ANL C 80C LUCY 55X 97E CPH LAWMAN 9L
 TIL-TOBA LUCY 35S 55X TIL-TOBA SILENCE 37J 35S

BW	EPDs	CE	BW	WW	YW	Milk	TM
76 lbs.		-1.8	5.0	56.9	95.1	27.8	56.3

226H has plenty of frame and a big middle. She is a female that is long fronted and easy to look at.

Exposed to GRH Z426 Excede 14H from May 28 to August 4, 2021 Preg checked safe early in service.



ANL C 114F LUCY 97E 226H

28

PC03071865 KKL 167H ANL 80C AVERIE 81F 167H March 21, 2020 Polled Female

TH 113W 11X HI-TECH 17A (DLF HYF IEF MSUDF) TH 71U 719T MR HEREFORD 11X (DLF HYF IEF)
 TH 105S 755T GEMINI 113W (DLF HYF IEF)
ANL 17A HI TECH 58W 80C (DLF HYF IEF) SHF RIB EYE M326 R117 (DLF HYF IEF)
 MOHICAN VIOLET 58W (DLF HYF IEF) CS GPR ROCK'S VIOLET 152S
 DRF JWR PRINCE VICTOR 71I
 TH 122 71I VICTOR 521X ET (DLF HYF IEF) KBCR 19D DOMINETTE 122 (DLF IEF)
ANL 521X AVERI 77D 81F TH 113W 11X HI-TECH 17A (DLF HYF IEF MSUDF)
 ANL 17A AVERI 2348 77D H W4 AVERI MAY 2348 ET

BW	EPDs	CE	BW	WW	YW	Milk	TM
75 lbs.		0.1	2.7	55.8	87.0	27.9	55.8

167H is moderate in frame and soggy made. She is out of a cow family that have very good udders and great milk flow. She has a balanced set of numbers.

Bred AI on May 28, 2021 to Glenlees 27C Kreed 3H. Preg checked safe to AI date.



ANL 17A HI TECH 58W 80C

29

PC03071893 KKL 238H ANL C 70F ZEVA 93F 238H May 20, 2020 Polled Female

ANL C HAR T100 TAHOE 86 ET 23B (DLF HYF IEF MSUDF MDF) SHF TAHOE R117 T100 (DLF HYF IEF MSUDF)
 ANL 7N MAPLE 86R (DLF HYF IEF)
ANL 23B TAHOE 36Y 70F (DLF HYF IEF) NJW FHF 9710 TANK 45P (DLF HYF IEF MDF)
 ANL 45P MIRIAH 36Y (DLF HYF IEF) ANL 98K MIRIAH 153S
 TH 113W 11X HI-TECH 17A (DLF HYF IEF MSUDF)
 ANL 17A HI TECH 58W 80C (DLF HYF IEF) MOHICAN VIOLET 58W (DLF HYF IEF)
ANL C 80C ZEVA 146C 93F JC RED ROCK 36Z (DLF HYF IEF)
 ANL C 36Z ZEVA 40Z 146C TIL-TOBA ZEVA 5R 40Z

BW	EPDs	CE	BW	WW	YW	Milk	TM
75 lbs.		0.3	3.8	55.4	89.1	23.4	51.1

This is the youngest bred in the sale. Her sire 70F is producing females that are highly maternal with very good udders.

Exposed to GRH Z426 Excede 14H from May 28 to August 4, 2021. Preg checked safe early in service



ANL C 70F ZEVA 93F 238H



TH 745A 7B START ME UP 71D

REF A

PC03045332

71D

TH 745A 7B **START ME UP 71D**
January 16, 2016 Polled Male

RVP STAR 533P CAN-AM ET 57U
 CB 57U CAN DOO 102Y (DLF HYF IEF MSUDF) HF 74M LIMELIGHT LADY 42P (DLF HYF IEF)
REMITALL-W START ME UP ET 7B (DLF HYF IEF MDF) SHF WONDER M326 W18 ET (DLF HYF IEF MDC)
 REMITALL-WEST MARVEL ET 76Y (DLF HYF IEF MDF) REMITALL MARVEL 78T (DLF HYF IEF)
 SHF RIB EYE M326 R117 (DLF HYF IEF)
 BOYD WORLDWIDE 9050 ET (DLF HYF IEF MDF) MSU TCF RACHAEL 22S ET
RANGELINE 11Y MISS WORLD 745A TH 122 71I VICTOR 719T (DLF HYF IEF MDF)
 RANGELINE 60S TEAR DROP 11Y RANGELINE 4G TEAR DROP 60S

BW	EPDs	CE	BW	WW	YW	Milk	TM
-- lbs.		-0.5	3.6	69.8	110.6	18.7	53.6

Progeny sell!



GLENLEES 27C KREED 3H

REF B

PC03075893

AHL 3H

GLENLEES 27C **KREED 3H**
February 1, 2020 Polled Male

NJW 76S P20 BEEF 38W ET
NJW 73S 38W RIMROCK 27C ET (MDF)
 NJW P606 72N DAYDREAM 73S (DLF HYF IEF)
 HAROLDSON'S WLL ANCHOR 4T
HAROLDSONS CARLA 4T 55Y (DLF HYF IEF)
 HAROLDSON'S CARLA 11P 37U
 SHF PROGRESS P20
 NJW 55N STARDUST 76S
 PW VICTOR BOOMER P606 (MDF)
 NJW 94J DEW 72N (DLF HYF IEF)
 REMITALL GOVERNOR 236G
 HAROLDSON'S 37H MIRA ET 62K
 HAROLDSON'S ROBUST 005 11P
 GHC MISS CARLA ET 40N

BW	EPDs	CE	BW	WW	YW	Milk	TM
82 lbs.		1.8	2.0	47.6	77.0	26.6	50.4

Service sells!

Owned by Brooks Farms.



GRH Z426 EXCEDE 14H

REF C

PC03071799

RND 14H

GRH Z426 **EXCEDE 14H**
January 27, 2020 Polled Male

TH 133U 719T UPGRADE 69X (DLF HYF IEF)
MOHICAN THM EXCEDE Z426 (MDF)
 NJW M326 UNFORGETTABLE 76W ET
 GHC VOLUME IV ET 150S
DTHF REBA 63Z
 DTHF REBA 29R
 TH 122 71I VICTOR 719T (DLF HYF IEF MDF)
 TH 14S 103R MEGAN 133U
 KCF BENNETT 3008 M326 (DLF HYF IEF MDF)
 NJW P606 72N DAYDREAM 73S (DLF HYF IEF)
 RU 20X BOULDER 57G (DLF HYF IEF)
 WALPOLE PHILIS 13F
 GNF 122L LINEDRIVE ET 56N
 DTHF MATILDA 123M

BW	EPDs	CE	BW	WW	YW	Milk	TM
83 lbs.		4.3	0.9	48.3	82.7	25.6	49.8

Service sells!

BROOKS FARMS

Box 241, Alameda, SK S0C 0A0

Blayne, Stacey, Ethan & Marshall: 306-485-7063

Jeremy, Rachelle, Hudson & Ryker: 306-485-8003

Blake, Amanda, Jack & Brynn: 306-485-8488

Haley: 306-485-9216

Email: jeremy_16@hotmail.com



BROOKS 1F 18D WHAT A DOLL 49H

This one is very attractive and has a presence about her. Complete in her design, big bodied with loads of rib, long in hip and cosmetically very eye appealing. Maternal brother working for John and Lisa Holden, Redvers, Sask and a maternal sister resides at Medonte Highlands.

Exposed to Glenlees 27C Kreed 3H May 21 to July 31, 2021. Observed bred May 21, 2021. Ultrasound Safe to May 21 service, 65 days, on July 31, 2021.

30

PC0307371

BRKS 49H

BROOKS 1F 18D WHAT A DOLL 49H
March 26, 2020 Polled Female

MHPH 521X ACTION 106A (DLF HYF IEF MSUDF) MHPH 301W DAINTY 205Y (DLF HYF IEF MSUDF MDF)
BROOKS 106A 30B ACTION 1F (DLF HYF IEF MSUDF MDF) NJW 73S W18 HOMETOWN 10Y ET (DLF HYF IEF MDC)
 GLENLEES DBK 10Y ART WORK 30B (DLF HYF IEF MDC) RVP STAR 45S SAY YES 53Y (DLF HYF IEF)

RVP 9050 ARCHITECT 46A (DLF HYF IEF)
RVP 46A WHAT A DOLL 18D
 RVP 122L BEYONCE ET 41B (DLF HYF IEF)

BOYD WORLDWIDE 9050 ET (DLF HYF IEF MDF)
 RVP RCY 100W YE HAW 130Y (DLF HYF IEF)
 REMITALL ONLINE 122L
 PED WHAT A GAL 65L

BW	EPDs	CE	BW	WW	YW	Milk	TM
93 lbs.		-0.5	4.6	65.5	103.6	29.2	62.0



GLENLEES 27C KREED 3H

Service Sire to Brooks Farms Bred Heifers

BROOKS FARMS | BRED HEIFERS

Her dam is a flush mate to ANL A XLP Action ET 75Z who bred so well for Rob O'Connor and family. Attractive through her front end, bold sprung in her rib, good hipped, with lots of lower third. Maternal sister retained in herd.

Bred May 2, 2021 to Glenlees 27C Kreed 3H and exposed to him May 21 to July 30, 2021. Ultrasound safe to May 2 service, 90 days, on July 31, 2021.



BROOKS 1F 53Z SPLENDID 34H

31

PC03073710 BRKS 34H March 9, 2020 Polled Female

BROOKS 1F 53Z **SPLENDID** 34H

MHPH 521X ACTION 106A (DLF HYF IEF MSUDF) MHPH 301W DAINTY 205Y (DLF HYF IEF MSUDF MDF) TH 122 71I VICTOR 521X ET (DLF HYF IEF) CRR ABOUT TIME 743 (DLF HYF IEF MDF)
BROOKS 106A 30B ACTION 1F (DLF HYF IEF MSUDF MDF) NJW 73S W18 HOMETOWN 10Y ET (DLF HYF IEF MDC) **ANL A 425X SPLENDID 143 ET 53Z (DLF HYF IEF)** TH 89T 743 UNTAPPED 425X ET (DLF HYF IEF) TH 16G 20N GEMINI 89T (DLF HYF IEF)
 GLENLEES DBK 10Y ART WORK 30B (DLF HYF IEF MDC) RVP STAR 45S SAY YES 53Y (DLF HYF IEF) ANL PBG 3N SPLENDOUR 143T (DLF HYF IEF) ANL SBS 122L CATTLELAC 3N ANL 8E SPLENDOUR 3M

BW	EPDs	CE	BW	WW	YW	Milk	TM
91 lbs.		-1.4	3.9	57.8	96.1	27.2	56.1

A powerful, heavily constructed female. She's got shape, muscle and sorts of dimension thought out. Being sired by Tahoe 23B only ensures udder quality.

Bred May 10, 2021 to Glenlees 27C Kreed 3H and exposed to him May 21 to July 30, 2021. Ultrasound safe to May 10 service, 85 days, on July 31, 2021.



BROOKS 23B 3E CANDY 5H

32

PC03071977 BRKS 5H

February 7, 2020

BROOKS 23B 3E **CANDY** 5H Polled Female

SHF TAHOE R117 T100 (DLF HYF IEF MSUDF) SHF LADY 512 L73 RVP 9050 ARCHITECT 46A (DLF HYF IEF) BOYD WORLDWIDE 9050 ET (DLF HYF IEF MDF)
ANL C HAR T100 TAHOE 86 ET 23B (DLF HYF IEF MSUDF MDF) ANL 2K SPECIALIST 7N **MOHICAN CANDY 3E** RVP RCY 100W YE HAW 130Y (DLF HYF IEF) TH 22R 16S LAMBEAU 17Y
 ANL 7N MAPLE 86R (DLF HYF IEF) ANL 32K MAPLE 47N (DLF HYF IEF) RVP 17Y CANDY 101C MAPLE-HILL 291U ARIELLE 54A

BW	EPDs	CE	BW	WW	YW	Milk	TM
86 lbs.		-1.1	5.7	70.7	109.4	22.6	58.0

33

PC03071972 BRKS 42H BROOKS 153D 146B GEISHA 42H Polled Female

TH 90U 17Y LAMBEAU 148B

TH 137B 148B LAMBEAU 153D

TH 128Z MAGGIE 137B

BLAIR-ATHOL 53U FANFARE 113Z (DLF HYF IEF)

BLAIR-ATHOL GEISHA GIRL 146B

BLAIR-ATHOL 13K MAVIS 115U

TH 22R 16S LAMBEAU 17Y

TH 80N 45P GEMINI 90U

TH 129X 9050 UNIVERSAL 121Z

TH 809T 74X MAGGIE 128Z

BLAIR-ATHOL CLASSIC 53U

BLAIR-ATHOL 66 FANNY ET 50W (DLF HYF IEF)

BLAIR-ATHOL 65F ON LINE 13K

BLAIR-ATHOL 122L MAVIS 61R

BW	EPDs	CE	BW	WW	YW	Milk	TM
93 lbs.		-2.4	4.4	54.1	93.6	23.7	50.8

The Lambeau 153D daughters we have in production are making nice productive cows. All possess nice tidy udders and work hard. She has an abundance of body, with a lot of length to it. Maternal Sister at Blair Athol Farms.

Exposed to Glenlees 27C Kreed 3H May 21 to July 31, 2021. Observed bred May 22, 2021. Ultrasound Safe to May 22 service, 65 days, on July 30, 2021.



BROOKS 153D 146B GEISHA 42H

34

PC03071979 BRKS 3H BROOKS 71D 20E SALLY 3H Polled Female

REMITALL-W START ME UP ET 7B (DLF HYF IEF MDF)

TH 745A 7B START ME UP 71D

RANGELINE 11Y MISS WORLD 745A

ANL C HART 100 TAHOE 86 ET 23B (DLF HYF IEF MSUDF MDF)

BROOKS 23B 12B SALLY 20E

BROOKS 425X SALLY 12B

CB 57U CAN DOO 102Y (DLF HYF IEF MSUDF)

REMITALL-WEST MARVEL ET 76Y (DLF HYF IEF MDF)

BOYD WORLDWIDE 9050 ET (DLF HYF IEF MDF)

RANGELINE 60S TEAR DROP 11Y

SHF TAHOE R117 T100 (DLF HYF IEF MSUDF)

ANL 7N MAPLE 86R (DLF HYF IEF)

TH 89T 743 UNTAPPED 425X ET (DLF HYF IEF)

BROOKS 83U SALLY 8X

BW	EPDs	CE	BW	WW	YW	Milk	TM
68 lbs.		3.6	3.2	62.9	99.5	19.3	50.8

Some of the best uddered cows we have, all come from the Sally/Wedlock cow family and we expect the same from Sally 3H. A member of the largest cow family we have one the place. Moderate in frame, big middled and sound made.

Bred May 2, 2021 to Glenlees 27C Kreed 3H and exposed to him May 21 to July 30, 2021. Ultrasound safe to May 2 service, 90 days, on July 31, 2021



BROOKS 71D 20E SALLY 3H

35

PC03071975 BRKS 14H BROOKS 206E 8D ARMANI 14H Polled Female

TH 403A 475Z PIONEER 358C ET

TH 13Y 358C BOTTOM LINE 206E

TH 54W 719T BETH 13Y

TH 89T 743 UNTAPPED 425X ET (DLF HYF IEF)

BROOKS 425X 071Y ARMANI 8D

CIRCLE D ARMANI 071 E

TH 89T 755T STOCKMAN 475Z

TH 71U 17Y RITA 403A

TH 122 71I VICTOR 719T (DLF HYF IEF MDF)

TH 6S 45P BETH 54W

CRR ABOUT TIME 743 (DLF HYF IEF MDF)

TH 16G 20N GEMINI 89T (DLF HYF IEF)

GO 3196 ADVANCE S109 (DLF HYF IEF)

LAKE LADY DOM 506R

BW	EPDs	CE	BW	WW	YW	Milk	TM
75 lbs.		1.2	3.3	61.8	101.4	21.4	52.3

Smooth made, with extra length of spine. Her mother was a former show heifer for ourselves and has adjusted to motherhood really well. A maternal sister is retained in herd.

Bred May 22, 2021 to Glenlees 27C Kreed 3H and exposed to him May 21 to July 30, 2021. Ultrasound safe to exposure, 40 days, on July 31, 2021.



BROOKS 206E 8D ARMANI 14H



BROOKS 153D 8G RAY-LYN 49J

A daughter of our resident caving ease sire Lambeau 153D. Crisp in her lines, pretty fronted and has loads of style. Her first calf Totem 5D mother really got it done.

36

PC03083029

TH 90U 17Y LAMBEAU 148B
TH 90U 17Y LAMBEAU 148B
 TH 128Z MAGGIE 137B

BRKS 49J

TH 22R 16S LAMBEAU 17Y
 TH 80N 45P GEMINI 90U
 TH 129X 9050 UNIVERSAL 121Z
 TH 809T 74X MAGGIE 128Z

March 30, 2021

HAROLDSON'S TOTEM 200Z 5D (DLF HYF IEF MSUDF)
BROOKS 5D 33X RAY-LYN 8G
 PCL RAY-LYN 22T 33X DLF HYF IEF

BROOKS 153D 8G RAY-LYN 49J
 Polled Female

CHURCHILL RED BULL 200Z (DLF HYF IEF MDF)
 BLAIR'S NELLIE R117 ET 5B (DLF HYF IEF)
 MICGIL'S POUNDER 204P 22T
 MICGIL'S RAY-LYN 46K 73P (DLF HYF IEF)

BW	EPDs	CE	BW	WW	YW	Milk	TM
83 lbs.		2.3	3.3	54.8	89.6	26.1	53.5



BROOKS 1F 85C JOY 53J

Here's one with a real nice sweep to her rib, has a little bit of extra extension to her front end and is long in her hip. Our first Action 1F daughter will come into production this spring. Check out the data that this one comes with.

37

PC03085759

MHPH 521X ACTION 106A (DLF HYF IEF MSUDF)
BROOKS 106A 30B ACTION 1F (DLF HYF IEF MSUDF MDF)
 GLENLEES DBK 10Y ART WORK 30B (DLF HYF IEF MDC)

BRKS 53J

TH 122 71I VICTOR 521X ET (DLF HYF IEF)
 MHPH 301W DAINTY 205Y (DLF HYF IEF MSUDF MDF)
 NJW 73S W18 HOMETOWN 10Y ET (DLF HYF IEF MDC)
 RVP STAR 45S SAY YES 53Y (DLF HYF IEF)

May 5, 2021

CHURCHILL STUD 3134A
BLAIR-ATHOL CS JOY 85C (DLF HYF IEF MSUDF)
 WMB 414Y'S JOY 135A (DLF HYF IEF)

BROOKS 1F 85C JOY 53J
 Polled Female

KJ HVH 33N REDEEM 485T ET (DLF HYF IEF)
 CHURCHILL LADY 002X ET
 MHPH 9W YOUNGBLOOD 414Y (DLF HYF IEF MSUDF)
 WMB 43U'S JOY 102Y (DLF HYF IEF)

BW	EPDs	CE	BW	WW	YW	Milk	TM
96 lbs.		3.2	2.7	59.1	96.0	35.1	64.7

Blairs.Ag

cattle company

Kevin & Noreen Blair; Darren & Deb Blair
 Box 610, Lanigan, SK S0K 2M0
 Kevin Blair: 306-365-7922 kevin@blairs.ag



SIRE OF EMBRYOS: HAROLDSONS WLC RHINO ET 48Y

38

HAROLDSONS WLC **RHINO** ET 48Y DLF HYF IEF
 x TH 403A 475Z **RITA** 352C ET
 Package of Three (3) Embryos

SHF TAHOE R117 T100 (DLF HYF IEF MSUDF)
HAROLDSONS WLC RHINO ET 48Y (DLF HYF IEF)
 HAROLDSON'S 37H MIRA ET 62K

TH 89T 755T STOCKMAN 475Z
TH 403A 475Z RITA 352C ET
 TH 71U 17Y RITA 403A

SHF RIB EYE M326 R117 (DLF HYF IEF)
 SHF LADY 512 L73
 REMITALL HOLLYWOOD 37H
 HAROLDSON'S CU DESTINY 2Z 19G
 TH 223 71I VICTOR 755T (DLF HYF IEF)
 TH 16G 20N GEMINI 89T (DLF HYF IEF)
 TH 22R 16S LAMBEAU 17Y
 TH 7N 45P RITA 71U (DLF HYF IEF)

PE EPDs	CE	BW	WW	YW	Milk	TM
	-0.5	4.9	66.3	115.1	25.3	58.5

Embryos stored at Bow Valley Genetics.



SIRE OF EMBRYOS: PERKS 0003 EASY MONEY 4003

39

PERKS 0003 **EASY MONEY** 4003
 x TH 403A 475Z **RITA** 352C ET
 Package of Three (3) Embryos

BR CURRENCY 8144 ET
PERKS 0003 EASY MONEY 4003
 PR 144U RAMONA 0003 ET

TH 89T 755T STOCKMAN 475Z
TH 403A 475Z RITA 352C ET
 TH 71U 17Y RITA 403A

DM BR SOONER
 BR GABRIELLE 5082
 TH 75J 243R BAILOUT 144U ET (DLF HYF IEF)
 PR 279R RAMONA 7024 ET
 TH 223 71I VICTOR 755T (DLF HYF IEF)
 TH 16G 20N GEMINI 89T (DLF HYF IEF)
 TH 22R 16S LAMBEAU 17Y
 TH 7N 45P RITA 71U (DLF HYF IEF)

PE EPDs	CE	BW	WW	YW	Milk	TM
	0.1	5.4	65.5	114.0	21.7	54.5

Embryos stored at Bow Valley Genetics.



SIRE OF EMBRYOS: NJW HOMETOWN 10Y

40

NJW 73S W18 **HOMETOWN** 10Y ET (DLF HYF IEF MDC)
 x HARVIE OVHF **UNIQUE** 166T (DLF HYF IEF)
 Package of Two (2) Embryos

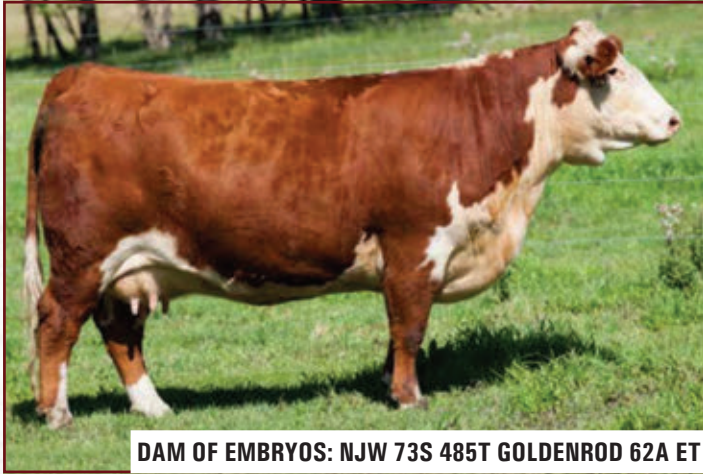
SHF WONDER M326 W18 ET (DLF HYF IEF MDC)
NJW 73S W18 HOMETOWN 10Y ET (DLF HYF IEF MDC)
 NJW P606 72N DAYDREAM 73S (DLF HYF IEF)

HARVIE RAFTSMAN 16R (DLF HYF IEF MDF)
HARVIE OVHF UNIQUE 166T (DLF HYF IEF)
 BBSF 100L UNIQUE ET 131R (DLF HYF IEF)

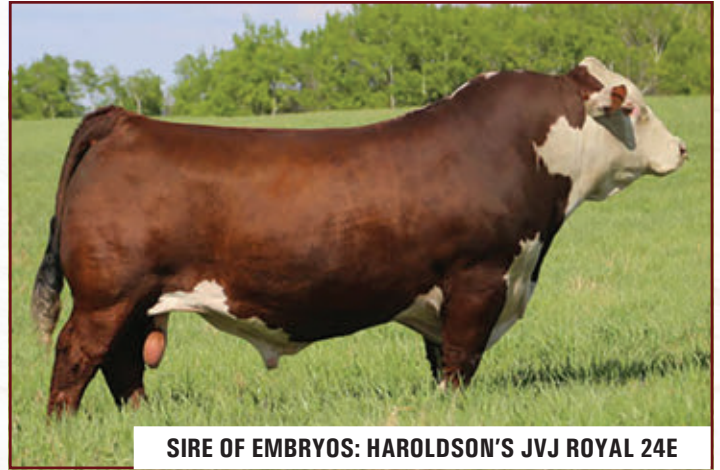
KCF BENNETT 3008 M326 (DLF HYF IEF MDF)
 SHF GOVERNESS 236G L37
 PW VICTOR BOOMER P606 (MDF)
 NJW 94J DEW 72N (DLF HYF IEF)
 HARVIE LADIES MAN 4L (DLF HYF IEF MDF)
 HARVIE MISS FIREFLY 51F (DLF HYF IEF)
 BRL CALL 100L (DLF IEF)
 BBSF 7C UNIQUE 1K

PE EPDs	CE	BW	WW	YW	Milk	TM
	2.0	3.7	58.1	91.6	28.4	57.5

Stored at Bow Valley Genetics.



DAM OF EMBRYOS: NJW 73S 485T GOLDENROD 62A ET



SIRE OF EMBRYOS: HAROLDSON'S JVJ ROYAL 24E

41

Haroldson's JVJ **Royal** 24E x NJW 73S 485T **Goldenrod** 62A ET
Package of Four (4) Embryos

H BK CCC SR GAME CHANGER ET
HAROLDSON'S JVJ ROYAL 24E (DLF HYF IEF MSUDF)
 HAROLDSON'S AD JESSICA 48Y 13B

KJ HVH 33N REDEEM 485T ET (DLF HYF IEF)
 NJW 78P 63N LADYSPORT 51W ET
 HAROLDSONS WLC RHINO ET 48Y (DLF HYF IEF)
 HAROLDSON'S WS JESSICA 4T 60X

KJ HVH 33N REDEEM 485T ET (DLF HYF IEF)
NJW 73S 485T GOLDENROD 62A ET
 NJW P606 72N DAYDREAM 73S (DLF HYF IEF)

SHF RADAR M326 R125 (DLF HYF IEF)
 HVH OKSANA 4L 33N (DLF HYF IEF)
 PW VICTOR BOOMER P606 (MDF)
 NJW 94J DEW 72N (DLF HYF IEF)

PE EPDs	CE	BW	WW	YW	Milk	TM
	0.8	4.4	58.9	95.8	28.5	57.9

Stored at Bow Valley Genetics.



SIRE OF EMBRYOS: WHITEHAWK WARRIOR 845C ET

42

Whitehawk **Warrior** 845C ET
x NJW 73S 485T **Goldenrod** 62A ET
Package of Four (4) Embryos

UPH PROSPECTOR P152
WHITEHAWK WARRIOR 845C ET
 GRANDVIEW CMR 4003 BETH Y115ET

KJ HVH 33N REDEEM 485T ET (DLF HYF IEF)
NJW 73S 485T GOLDENROD 62A ET
 NJW P606 72N DAYDREAM 73S (DLF HYF IEF)

HUTH PROSPECTOR K085
 UPH MANDY M863
 GRANDVIEW VIC H132 23G 4003 ET
 DJB 46B BETH 1L
 SHF RADAR M326 R125 (DLF HYF IEF)
 HVH OKSANA 4L 33N (DLF HYF IEF)
 PW VICTOR BOOMER P606 (MDF)
 NJW 94J DEW 72N (DLF HYF IEF)

PE EPDs	CE	BW	WW	YW	Milk	TM
	1.0	3.3	68.6	106.4	35.6	69.9

Stored at Bow Valley Genetics.



George & Annette Lees
 Box 358, Arcola, SK S0C 0G0
 Phone: 306-455-2612

Corey, Tasha, Emma, Kyla & Becca Lees
 Box 1, Arcola, SK S0C 0G0
 Phone: 306-455-2714 Cell: 306-577-9971
 Fax: 306-455-2177
 tclees@signaldirect.ca www.glenlees.com



GLENLEES 173 RACHELLE 60J

43

PC03084437

AHL 60J

February 17, 2021

GLENLEES 173 RACHELLE 60J
 Polled Female

KCF BENNETT ENCORE Z311 ET DLF HYF IEF
NJW 79Z Z311 ENDURE 173D ET (DLF HYF IEF MSUDF MDF)
 BW 91H 100W RITA 79Z ET

SCHU-LAR ON TARGET 22S
 KCF MISS REVOLUTION X338 ET
 NJW 73S M326 TRUST 100W ET (DLF HYF IEF)
 REMITALL RITA 91H

HAROLDSONS WLC JACK ET 57Y (DLF HYF IEF)
ANL LC 57Y RACHELLE 137X 99B
 ANL LC 80S RACHELLE 137X

SHF TAHOE R117 T100 (DLF HYF IEF MSUDF)
 HAROLDSON'S 37H MIRA ET 62K
 ANL SBS 36N TAYLOR 80S
 ANL BP 3D RH RACHELLE 12S

BW	EPDs	CE	BW	WW	YW	Milk	TM
89 lbs.		-0.6	4.0	66.6	112.1	28.1	61.4

Endure progeny have been taking the show and sale rings by storm. A female that is sound, big bodied and easy to look at possessing that extra pigment. Her mother is a very powerful Jack daughter.

GLENLEES FARM | HEIFER CALVES



GLENLEES BNC STARMAKER ET 147J



DAM OF LOT 44

A cool made Leader daughter out of our donor cow Star Maker that had a very successful show career. Fully pigmented, big hiped, great legged and a super front third. Need a young show heifer....here she is! Just a late March baby. We will be entering her at Agribition.

44

PC03086015

HYALITE ON TARGET 936
R LEADER 6964
 R MISS REVOLUTION 1009

AHL 147J

SCHU-LAR ON TARGET 22S
 HYALITE TS LASS 310
 MSU TCF REVOLUTION 4R (DLF HYF IEF)
 R MISS WRANGLER 3007

GLENLEES BNC STARMAKR ET 147J (DLF HYF IEF MSUDF)
 March 25, 2021 Polled Female

TH 512X 719T PLAYMAKER 14Z (MDF)
BNC 14Z STAR MAKER 69C (DLF HYF IEF)
 BNC 220P CHELSEA 69Z

TH 122 71I VICTOR 719T (DLF HYF IEF MDF)
 TH 122 71I DOMINETTE 512X ET
 GF 4L CONTENDER 220P
 BIRD'S-HILL CHELSEA 48U

BW	EPDs	CE	BW	WW	YW	Milk	TM
82 lbs.		1.6	2.9	68.2	113.8	20.8	54.9



GLENLEES 27C FINLEY 84J

It's never easy letting go of Rimrock daughter's. This heifer has extra length of body, big bodied and great muscle pattern. Her mother was purchased from Doug Troop and has done an excellent job. Maternal sister sold to Cassandra Moore in last years sale.

45

PC03084438

NJW 76S P20 BEEF 38W ET
NJW 73S 38W RIMROCK 27C ET (MDF)
 NJW P606 72N DAYDREAM 73S (DLF HYF IEF)

AHL 84J

SHF PROGRESS P20
 NJW 55N STARDUST 76S
 PW VICTOR BOOMER P606 (MDF)
 NJW 94J DEW 72N (DLF HYF IEF)

February 22, 2021

WCC 17Y MR LAMBEAU 1337C (DLF HYF IEF MSUDF)
DTHF FINLEY 40F
 DTHF DOMINIQUE 128D

GLENLEES 27C FINLEY 84J
 Polled Female

TH 22R 16S LAMBEAU 17Y
 WCC 362T TAYLOR 1337A
 ANL DM 719T VICTOR 76S ET 47Z (DLF HYF IEF)
 DTHF UTMOST 13U

BW	EPDs	CE	BW	WW	YW	Milk	TM
80 lbs.		5.5	1.5	52.5	79.0	32.9	59.2

Our first Whitman calf to sell. Whitman is a low birth, short gestation sire. She is fully pigmented and is very hard to fault. Bold in her rib and has some power to her. A very maternal pedigree and she will look great in production. Maternal sister sells as lot 53.



GLENLEES DBK 34G UMA LYN 7J

46

PC03084441

LJR 023R WHITMORE 10W (MDF)
NJW 165A 10W WHITMAN 34G ET
 NJW 137X 10Y FAITH 165A

AHL 7J

January 31, 2021

GLENLEES DBK 34G **UMA LYN 7J**
 Polled Female

KJ C&L J119 LOGIC 023R ET
 LJR MICKEY 278N
 NJW 73S W18 HOMETOWN 10Y ET (DLF HYF IEF MDC) **GLENLEES DBK 27C UMA LYN 71F**
 NJW 67U 3027 VACA 137X
 GLENLEES AH 26A UMA LYN 48C
 NJW 76S P20 BEEF 38W ET
 NJW P606 72N DAYDREAM 73S (DLF HYF IEF)
 GLENLEES 719T OPTION ET 26A (DLF HYF IEF)
 GLENLEES DBK 57Y UMA LYN 43A

BW	EPDs	CE	BW	WW	YW	Milk	TM
80 lbs.		5.3	0.9	51.8	78.1	23.6	49.5

Tremendous brood cow prospect here. The 4013 progeny are so 'cowy' looking and in production are taking the lead wherever you find them. A female that will look after her business and look good doing it!



INNISFAIL WHR X651/723 4013 ET- SIRE OF LOT 47



GLENLEES 4013 LIBBY 55J

47

PC03084434

EFBEEF TFL U208 TESTED X651 ET
INNISFAIL WHR X651/723 4013 ET (MDF)
 INNISFAIL P230 T723

AHL 55J

JFebruary 15, 2021

GLENLEES 4013 **LIBBY 55J**
 Polled Female

EFBEEF FOREMOST U208 (DLF HYF IEF)
 EFBEEF P606 MABEL R415
 EF F745 FRANK P230 (DLF HYF IEF)
 INNISFAIL 235 R501 ET
 HAROLDSONS WLC JACK ET 57Y (DLF HYF IEF)
GLENLEES 57Y LIBBY 14B
 WTK ANL 705G LIBBY 114P
 SHF TAHOE R117 T100 (DLF HYF IEF MSUDF)
 HAROLDSON'S 37H MIRA ET 62K
 YY 707B VENTURE ET 705G
 WTK 5F LIBBY 60J

BW	EPDs	CE	BW	WW	YW	Milk	TM
90 lbs.		-2.7	4.1	63.4	105.7	24.6	56.3



48

PC03086014

AHL 112J

GLENLEES AXA *EVOLVE* ET 112J {DLF HYF IEF MSUDF}
 March 6, 2021 **Homo Polled Male**

KCF BENNETT ENCORE Z311 ET DLF HYF IEF
NJW 79Z Z311 ENDURE 173D ET (DLF HYF IEF MSUDF MDF)
 BW 91H 100W RITA 79Z ET

SCHU-LAR ON TARGET 22S
 KCF MISS REVOLUTION X338 ET
 NJW 73S M326 TRUST 100W ET (DLF HYF IEF)
 REMITALL RITA 91H

MHPH 521X ACTION 106A (DLF HYF IEF MSUDF)
RVP 106A CAMEO GIRL 45C (DLF HYF IEF)
 GPCL QUEEN MAKER 118U 61Z (DLF HYF IEF)

TH 122 71I VICTOR 521X ET (DLF HYF IEF)
 MHPH 301W DAINTY 205Y (DLF HYF IEF MSUDF MDF)
 MHPH 101S UMPIRE 118U (DLF HYF IEF MSUDF MDF)
 PCL QUEEN MAKER 36N ET 9U (DLF HYF IEF)

GE+EPD

BW	EPDs	CE	BW	WW	YW	Milk	TM
94 lbs.		-0.2	5.2	73.2	114.2	28.9	65.5

Homozygous polled with an incredible herd bull look and presence! Fully pigmented, freckles and dark in color. Explosive muscle expression, depth of rib, sound and great in his bone structure. Every herd bull needs a great mother and Evolve has just that! Cameo Girl was Agribition Champion female in 2018 and a top ten finalist in the Supreme. She then also went on to be named Miss Hereford World. She is the mother of Herd bulls Humbolt 1F, owned with Topp Herefords and Pelton Polled Herefords and Element 118G, owned with Moorehaven Polled Herefords. An exciting calf with a very bright future!

Terms to be Announced.



RVP 106A CAMEO GIRL 45C- DAM OF LOT 48



NJW 79Z ENDURE 173D ET-SIRE OF LOT 48

Ultra great looking daughter of Rimrock here. Clean cut and sound to the ground. Backed by a cow family with excellent udders and the results will show when she calves. Rimrock's are making great females in production.

Bred May 23, 2021 to Mohican 4013 Upload 39G. Ultra-sounded safe to this service.



GLENLEES BNC 27C MARIE 112H

49
PC03075944

AHL 112H

March 19, 2020

GLENLEES BNC 27C **MARIE** 112H
Polled Female

NJW 76S P20 BEEF 38W ET
NJW 73S 38W RIMROCK 27C ET (MDF)
NJW P606 72N DAYDREAM 73S (DLF HYF IEF)

SHF PROGRESS P20
NJW 55N STARDUST 76S
PW VICTOR BOOMER P606 (MDF)
NJW 94J DEW 72N (DLF HYF IEF)

TH 809T 14Z PLAYMAKER 80B
BNC GLENLEES 80B MARIE 97D
MOOREHAVEN GLENA MARIE 18X 4A

TH 512X 719T PLAYMAKER 14Z (MDF)
TH 217E 57G MAGGIE 809T ET
CHSF TR MARVEL 18X (DLF HYF IEF)
MOOREHAVEN GLENA MARIE 18R 2U

BW	EPDs	CE	BW	WW	YW	Milk	TM
78 lbs.		2.1	2.2	50.5	82.9	29.0	54.3

Out of a very productive Heat daughter. This Rimrock daughter possess a little more bone and power than some. She will look great in production.

Bred May 23, 2021 to Mohican 4013 Upload 39G. Ultra-sounded safe to this service.



NJW 73S 38W RIMROCK 27C ET



GLENLEES BNC 27C ANNABEL 23H

50
PC03075905

AHL 23H

February 13, 2020

GLENLEES BNC 27C **ANNABEL** 23H
Polled Female

NJW 76S P20 BEEF 38W ET
NJW 73S 38W RIMROCK 27C ET (MDF)
NJW P606 72N DAYDREAM 73S (DLF HYF IEF)

SHF PROGRESS P20
NJW 55N STARDUST 76S
PW VICTOR BOOMER P606 (MDF)
NJW 94J DEW 72N (DLF HYF IEF)

BNMHPH 13P HEAT 101S (DLF HYF IEF MDF)
BNC 101S ANNABEL 14Z
PLPH ANNABEL 122T

REMITALL PATRIOT ET 13P
ANL PBG 29F BONNIE 21P
FCC 60G MADDUX 4L
BNC 815 ELEGANT 206M

BW	EPDs	CE	BW	WW	YW	Milk	TM
84 lbs.		-0.1	3.2	51.2	79.5	25.9	51.5

GLENLEES FARM | BRED HEIFERS



GLENLEES J 1F WILMA 43H

The first Humbolt's will be coming into production in the spring. A very complete, sound, moderate made female. This girl stands to have a beautiful udder and will be great in production.

Bred AI to Boyd Ft Knox 17Y XZ5 4040 on May 23, 2021. Ultra-sounded safe to this service.



GLENLEES 5D HUMBOLT 1F

51

PC03075914

AHL 43H

February 18, 2020

GLENLEES J 1F WILMA 43H {MDF}
Polled Female

HAROLDSON'S TOTEM 200Z 5D (DLF HYF IEF MSUDF)	CHURCHILL RED BULL 200Z (DLF HYF IEF MDF)	BNC W18 WONDER 102B (DLF HYF IEF)	SHF WONDER M326 W18 ET (DLF HYF IEF MDC)
GLENLEES 5D HUMBOLT 1F (DLF HYF IEF MSUDF)	BLAIR'S NELLIE R117 ET 5B (DLF HYF IEF)	GLENLEES 102 WILMA 47F	CGVH 13P CAPITOL HILL 90U (DLF HYF IEF)
RVP 106A CAMEO GIRL 45C (DLF HYF IEF)	MHPH 521X ACTION 106A (DLF HYF IEF MSUDF)	GLENLEES DBK 94Z WILMA 37C	NJW 100W FOUNDATION 54Z ET
	PCL QUEEN MAKER 118U 61Z (DLF HYF IEF)		GHC MISS WILMA 173X

BW	EPDs	CE	BW	WW	YW	Milk	TM
68 lbs.		0.9	2.6	63.7	90.2	28.8	60.7



GLENLEES DBK 27C CANDI 14H

Tremendous amount of body in this Rimrock daughter. She has brood cow written all over her and has the genetics to back it up!

Bred May 18, 2021 to NJW 165A 10W Whitman 34G ET. Ultra-sounded safe to this service.

52

PC03075899

AHL 14H

February 9, 2020

GLENLEES DBK 27C CANDI 14H
Polled Female

NJW 76S P20 BEEF 38W ET	SHF PROGRESS P20	MEADOW-ACRES CONNECTED 13K 86R	BLAIR-ATHOL 65F ON LINE 13K
NJW 73S 38W RIMROCK 27C ET (MDF)	NJW 55N STARDUST 76S	MIL-WRAY CANDI 34Z	MEADOW-ACRES 66E ADA 102M 5G
NJW P606 72N DAYDREAM 73S (DLF HYF IEF)	PW VICTOR BOOMER P606 (MDF)	MIL-WRAY MOLLY 28S	DTHF MARLBOROUGH 44M
	NJW 94J DEW 72N (DLF HYF IEF)		MIL-WRAY FRAN 6P

BW	EPDs	CE	BW	WW	YW	Milk	TM
81 lbs.		2.9	2.1	47.0	73.8	26.1	49.6

Goggle eyed and easy on the eye! The Uma Lyn cow family originated out of the River Valley program and is a productive, low birth cow family. As these Fortified's have matured they have developed into great looking cow prospects. This heifer will lay down an impeccable udder! Maternal sister sells as lot 46.

Bred on May 11, 2021 to NJW 165A 10W Whitman ET. Ultra-sounded safe to this service.



GLENLEES DBK 207 UMA LYN 29H

53

PC03075909

AHL 29H

February 15, 2020

GLENLEES DBK 207 **UMA LYN** 29H {MDF} Polled Female

BOYD FT KNOX 17Y XZ5 4040
NJW 133A4040 FORTIFIED207F ET (MDC)
 BW NJW 76S 8Y HOMESPUN 133A

TH 22R 16S LAMBEAU 17Y
 DOSS MY EYES ADORE U DHZ5
 NJW 73S W18 HOMETOWN 10Y ET (DLF HYF IEF MDC)
 NJW 55N STARDUST 76S

NJW 73S 38W RIMROCK 27C ET
GLENLEES DBK 27C UMA LYN 71F
 GLENLEES AH 26A UMA LYN 48C

NJW 76S P20 BEEF 38W ET
 NJW P606 72N DAYDREAM 73S (DLF HYF IEF)
 GLENLEES 719T OPTION ET 26A (DLF HYF IEF)
 GLENLEES DBK 57Y UMA LYN 43A

BW	EPDs	CE	BW	WW	YW	Milk	TM
58 lbs.		11.6	-1.9	44.1	66.7	29.3	51.4

A very complete made female that is hard to fault. Being sired by Fortified and out of the Reva cow family you can rest assured she will lay down a picture perfect udder. The mother of this heifer is the Bonanza Champion Female in 2019 in Weyburn as a bred hfr. We have shown 32F this summer and was Mature Cow/Calf Champion at Bonanza in Camrose.

Just recently she was named Reserve Overall Breeds Champion at Young Ranchman's in Swift Current.

Bred May 23, 2021 to Mohican 4013 Upload 39G. Ultra-sounded safe to this service.



Dam of Lot 54



GLENLEES SNBR 207 REVA 20H

54

PC03075902

AHL 20H

February 12, 2020

GLENLEES SNBR 207 **REVA** 20H {MDF} Polled Female

BOYD FT KNOX 17Y XZ5 4040
NJW 133A4040 FORTIFIED207F ET (MDC)
 BW NJW 76S 8Y HOMESPUN 133A

TH 22R 16S LAMBEAU 17Y
 DOSS MY EYES ADORE U DHZ5
 NJW 73S W18 HOMETOWN 10Y ET (DLF HYF IEF MDC)
 NJW 55N STARDUST 76S

NJW 73S 38W RIMROCK 27C ET (MDF)
GLENLEES 27C REVA 32F
 GLENLEES 145Y REVA 1C

NJW 76S P20 BEEF 38W ET
 NJW P606 72N DAYDREAM 73S (DLF HYF IEF)
 FTF PROSPECTOR 145Y (DLF HYF IEF)
 SINNIBARS MS 719T REVA 126A

BW	EPDs	CE	BW	WW	YW	Milk	TM
68 lbs.		7.7	-0.1	52.7	75.7	31.9	58.3

GLENLEES FARM | BRED HEIFERS



GLENLEES DBK 6C LANA 26H

55 GLENLEES DBK 6C LANA 26H

PC03075907 AHL 26H February 14, 2020 Polled Female

NJW FHF 9710 TANK 45P (DLF HYF IEF MDF)
BLAIR'S 45P 33W SOUTHPAW ET 6C (DLF HYF IEF)
 HAROLDSONS TEMPTRESS T100 33W (DLF HYF IEF)

FHF 8403 STARBUCK 19H
 GV 579 VICTORIA 9710
 SHF TAHOE R117 T100 (DLF HYF IEF MSUDF)
 HAROLDSONS TEMPTRESS 13P 25S

WLB LEGO 83T 90X (DLF HYF IEF)

WLB ELI 10H 83T (DLF HYF IEF)

WLB 90X LANA 57B

WLB 50S GLORIA 35U (DLF HYF IEF)

WLB 81S ENID 34Z

NJW 8E 120J EMBASSY 81S ET (DLF HYF IEF)

WLB 29F SALLY ET 702T (DLF HYF IEF)

BW	EPDs	CE	BW	WW	YW	Milk	TM
88 lbs.		-2.2	3.8	55.8	88.3	24.8	52.7

A very well made, balanced daughter of South Paw. Her Lego mother can flat out produce them. A maternal sister is here in production with another great hfr calf again this year.

Bred May 15, 2021 to NJW 165A 10W Whitman 34G ET. Ultra-sounded safe to this service.



GLENLEES 351E ART WORK 99H

56

GLENLEES 351E ART WORK 99H

PC03075940 AHL 99H March 11, 2020 Polled Female

TH 89T 755T STOCKMAN 475Z
TH 403A 475Z STOCKMAN 351C ET
 TH 71U 17Y RITA 403A

TH 223 71I VICTOR 755T (DLF HYF IEF)
 TH 16G 20N GEMINI 89T (DLF HYF IEF)

TH 22R 16S LAMBEAU 17Y

TH 7N 45P RITA 71U (DLF HYF IEF)

WLB EASY STREET 90X 100Z (DLF HYF IEF)

WLB WINCHESTER EASY RIDE 27B (DLF HYF IEF)

WLB 503W ALICE ET 8401Y (DLF HYF IEF MSUDF)

GLENLEES 27B ART WORK 59E

TH 122 71I VICTOR 719T (DLF HYF IEF MDF)

GLENLEES 719T ART WORK ET 36A (DLF HYF IEF)

RVP STAR 122L ART WORK ET 35W (DLF HYF IEF)

BW	EPDs	CE	BW	WW	YW	Milk	TM
86 lbs.		0.9	3.9	57.1	97.2	19.9	48.5

Dark in color and fully pigmented. Very complete made and will make a really nice female in production. The Art Work family has been real productive for us.

Bred June 2 to Glenlees 6C Element 118G. (South Paw / Cameo Girl) Ultra-sounded safe to this service.



MOHICAN 4013 UPLOAD 39G

REF D

MOHICAN 4013 UPLOAD 99H

PC03085649 MW39G February 9, 2019 Polled Male

EFBEEF TFL U208 TESTED X651 ET
 INNISFAIL WHR X651/723 4013 ET (MDF)
 INNISFAIL P230 T723 P A42843247

EFBEEF FOREMOST U208 (DLF HYF IEF)

EFBEEF P606 MABEL R415 P

EF F745 FRANK P230 (DLF HYF IEF)

INNISFAIL 235 R501 ET P A42666992

MOHICAN XTREME 2X P A43115298

NJB 218 EASY DOMINO ET P A24020805

MOHICAN LUCKY LADY Z60 P A43293132

GRANDVIEW CMR P606 LASS T413 P A42946198

MOHICAN LUCKY LADY 224W P A43091420

SHF RIB EYE M326 R117 (DLF HYF IEF) P C02910420

MOHICAN LUCKY LADY 107L P A42150915

EPDs	CE	BW	WW	YW	Milk	TM
	-0.4	4.2	66.1	102.3	24.1	57.2

REF D NJW 165A 10W **WHITMAN** 34G ET_{DLF HYF IEF MSUDF}

PC03081259 165A34G FEBRUARY 3, 2019 Polled Male

KJ C&L J119 LOGIC 023R ET
LJR 023R WHITMORE 10W (MDF)
 LJR MICKEY 278N

NJW 73S W18 HOMETOWN 10Y ET (DLF HYF IEF MDC)
NJW 137X 10Y FAITH 165A
 NJW 67U 3027 VACA 137X

DRF JWR PRINCE VICTOR 711
 SHF INTERSTATE D03 J119
 LJR D188 SABRE 69H
 LJR BROOKE 188L
 SHF WONDER M326 W18 ET (DLF HYF IEF MDC)
 NJW P606 72N DAYDREAM 73S (DLF HYF IEF)
 UPS DOMINO 3027 (DLF HYF IEF)
 NJW 4037 80L FAITH 67U

EPDs	CE	BW	WW	YW	Milk	TM
	10.2	0.1	55.6	77.8	18.8	46.6



NJW 165A 10W WHITMAN 34G ET

REF E BOYD **FT KNOX** 17Y XZ5 4040
 PC03045770 4040 JANUARY 5, 2014 Polled Male

TH 121L 63N TUNDRA 16S
 TH 22R 16S LAMBEAU 17Y
 TH 62N 3L KELSEY 22R

BOYD WORLDWIDE 9050 ET (DLF HYF IEF MDF)
 DOSS MY EYES ADORE U DHZ5
 DHF COVER GIRL C902

TH JWR SOP 16G 57G TUNDRA 63N (DLF HYF IEF)
 KB 17F CASSANDRA 121L (DLF IEF)
 S&S ROCK SOLID 3L
 TH 605F 57G KELSEY 62N
 SHF RIB EYE M326 R117 (DLF HYF IEF)
 MSU TCF RACHAEL 22S ET
 MSU TCF REVOLUTION 4R (DLF HYF IEF)
 CB LADY DOLL 513

EPDs	CE	BW	WW	YW	Milk	TM
	11.1	0.4	54.9	79.7	20.1	47.6



BOYD ft knox17Y XZ5 4040

TERMS & CONDITIONS

Terms
 The terms of the sale are cash or cheque, payable at par at the sale location. The right of property shall not pass until after settlement has been made; no invoicing on buyers in attendance unless previous arrangements have been made. Every animal sells to the highest bidder and in cases of disputes, the auctioneer's decision will be final. Announcements from the auction block will take precedence over the printed matter in the catalogue. Current exchange rates will be announced sale day. All monies are in Canadian funds.

Certificate of Registration
 Each animal will carry papers issued by the Canadian Hereford Association. A certificate of registry duly transferred will be furnished to the buyer for each animal after payment has been made.

Pedigree Estimates
 Pedigree Estimates (PE) are created on the projected mating of the animal's sire and dam based on averages of the two, creating estimated values that do not hold the same accuracy of actual EPDs issued from the association and should be used as such.

Health
 All animals in the sale have met all necessary health requirements.

Guarantee
 Each animal becomes the purchaser's risk immediately after the animal is sold. All animals in this sale will be sold under the terms and guarantees set forth by the Canadian Hereford Association with regards to health, freedom from defects and from both reproductive and specific genetic unsoundness.

Pregnancy Information
 All serviceable age females have been pregnancy examined by an accredited veterinarian, giving an estimated length of gestation. This estimated gestation period shall be used only as a guideline to calving and is not a guarantee of actual service.

Liabilities
 All persons attend the sale at their own risk. The seller, facility owner and sale manager assume no liability, legal or otherwise, for any accidents that occur. It is understood that T Bar C Cattle Co. (2013) Ltd. is acting only as a medium between buyer and seller and is not responsible for any failure on the part of either party to live up to his obligations. Neither does T Bar C Cattle Co. (2013) Ltd. assume any financial obligations to collect or enforce collection of any monies between parties and any legal action that may, in exceptional cases, be taken must be between the buyer and the seller. T Bar C Cattle Co. (2013) Ltd. assumes no responsibility for any credit extended by the seller to the buyer. The buyer must look to the seller for fulfillment of all guarantees and representations made hereunder.

Delivery
 Assistance will be given in getting your purchases home. Each animal becomes the risk of the purchaser as soon as sold.

Phone, Mail, Wire Bids
 Bidders unable to attend the sale may phone, wire or mail their bids and instructions to the sale manager, auctioneer or special representatives. Bids must be received in sufficient time prior to the sale.

Insurance
 We strongly recommend that insurance is purchased for full value.

Errors
 All announcements at sale time, written or oral, supersede any written material in the catalogue.

**Return Undeliverable
Canadian Addresses To:**

**T Bar C Cattle Co. Ltd.
Box 2330
Warman, SK S0K 4S0**



Created by
Today's
Publishing